



Hong Kong General Chamber of Commerce
香港總商會1861

HKGCC Belt and Road Working Group

Xiamen Belt and Road Seminar



HKSAR's Belt and Road Summit



Looking Past the Crises – Financial Services in Hong Kong and the role of the Belt and Road



Mission to Morocco : Meeting with Economic Advisor of Chinese Embassy Visit to medieval fortified Muslim necropolis Chellah



Mission to Ghana : High – level Contact: Meeting Vice President Mahamudu Bawumia



同心展關懷

caring organisation

Awarded by The Hong Kong Council of Social Service
香港社會服務聯會頒發

DOWNLOAD THE CHAMBER'S APP AND ENJOY GREAT BENEFITS



ARCHITECTURE

PLANNING

INTERIOR

LANDSCAPE

DEVELOPMENT
CONSULTANCY



You Tube



www.hpahk.com

OUR STORY

www.hpahk.com

hpa

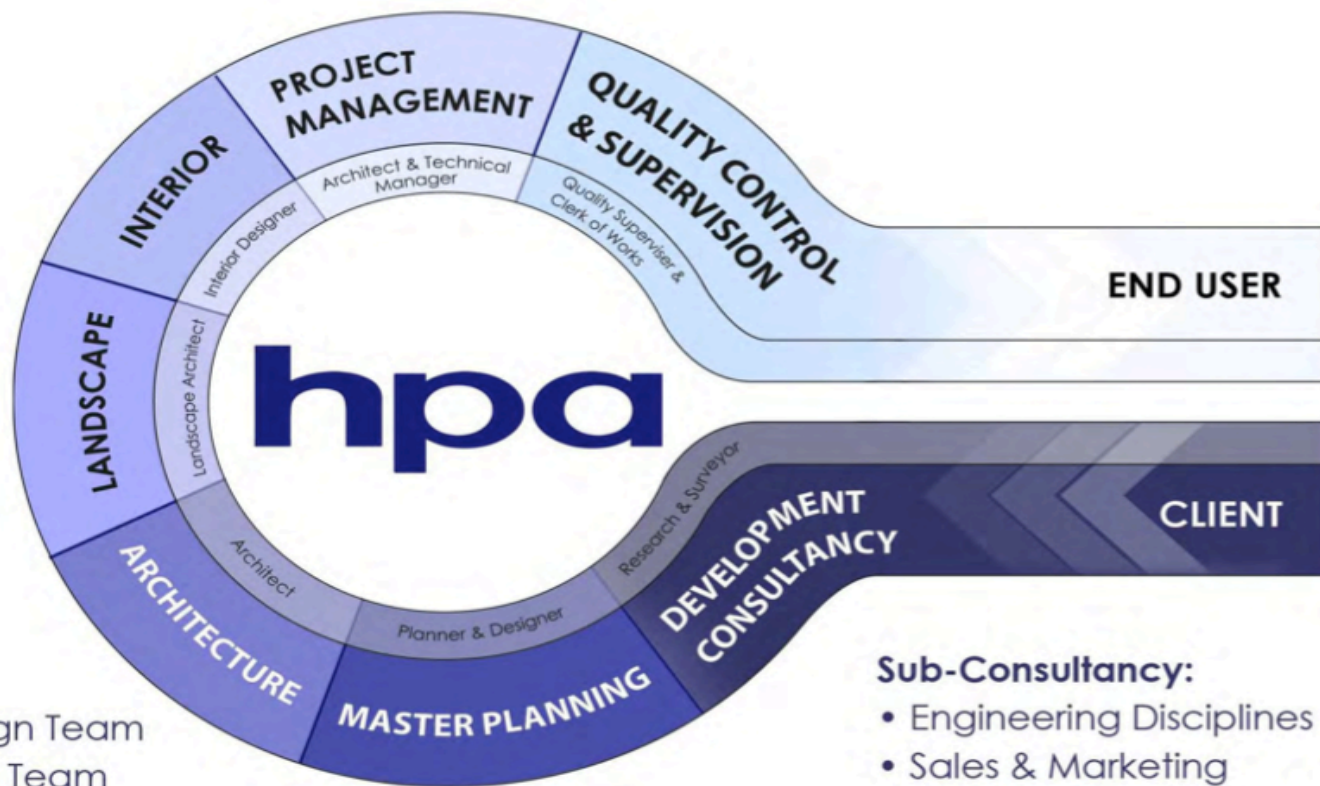
ARCHITECTURE WITNESSING THE PROGRESS OF HUMAN CIVILISATION

www.hpahk.com

hpa

AN INTEGRATED PROFESSIONAL **ONE-STOP** SERVICES PLATFORM

OFFERING A THE FULL SPECTRUM OF DEVELOPER'S SERVICES



In-house Support :

- Sustainable Design Team
- Design Research Team
- Visualisation Team
- Model Making Team

Sub-Consultancy:

- Engineering Disciplines
- Sales & Marketing

1 BILLION

SQUARE FEET CONSTRUCTED FOOTPRINT

Projects on over

10

COUNTRIES

Across more than

50

CITIES

More than

750,000

RESIDENTIAL UNITS

House more than

2,000,000

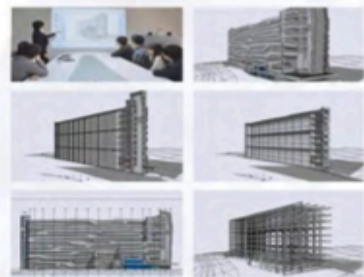
PEOPLE



OUR SERVICES

BIM TEAM

In 2012, **hpa** has set up a BIM team, an abbreviation for Building Information Modeling, which builds models based on numbers of exact data. Provided with all the necessary information, hpa can build emulated three dimensional models with the time and cost elements factored into the design methodology. Such can greatly improve the design and production coordination among client, consultant team and contractor; allow a more efficient and accurate design process from inception to completion.



SUSTAINABLE DESIGN TEAM

hpa has a strong Sustainable Design Team, as the founding member of China Green Building Council since 2010. hpa has a number of Hong Kong BEAM accredited members constantly exploring new boundaries for sustainable and energy efficient design concepts and technologies. Since its establishment, **hpa** has successfully completed a few LEED and BEAM accredited projects in Hong Kong and China. The team continues to look for innovative and sustainable solutions for our built environment, both short and long term.



DESIGN RESEARCH & DEVELOPMENT TEAM

The design research team specialises in collecting and analysing information assessing contemporary architectural trends locally and overseas, the latest building, environmental, engineering, and information technologies, as well as economic and social trends. It publishes internal research reports with the aim to disseminate information continuously on latest design and technological ideas. Since its establishment over a decade ago, the team had pioneered multiple design aided programmes and softwares to facilitate the design practice.



MODEL & 3D VISUALISATION TEAM

The over 20 strong Graphics and Study Model Team constitutes an integral part to the design process in providing 3-D visualizations and verifications from conceptual to detailed design with large scale study models (1:20 to 1:1 at times). The company calls on its design directors and senior designers to pool their individual talent and experience in master planning, creative building design and construction technology and participate closely in the 3-D design process. The team also provide 3-D animations and walk throughs in order to demonstrate the realistic spatial experience in the design.



MY STORY

www.hpahk.com

hpa

ART OF PROBLEM SOLVING

www.hpahk.com

hpa

MY JOURNEY

www.hpahk.com

hpa

PLACES

www.hpahk.com

hpa







DSUN 山海大家



BAFETTO

FruitOrama

STARBUCKS

274 JAFFE ROAD

ARCH

COMMUNITIES

www.hpahk.com

hpa















徐盈路站















DSUN
UNIVERSITY



DSUN
山能大厦



益世家
YISHI FAMILY RESIDENTIAL CENTER



ECONOMIES

www.hpahk.com

hpa









馬來西亞吉隆坡
Kuala Lumpur, Malaysia

Subang Avenue Shopping Mall



馬來西亞
Malaysia

Sorrento, Semenyih



馬來西亞吉隆坡
Kuala Lumpur, Malaysia

Bukit Ceylon Mixed Development



馬來西亞吉隆坡
Kuala Lumpur, Malaysia

Master Plan, Taman Tar



馬來西亞吉隆坡
Kuala Lumpur, Malaysia

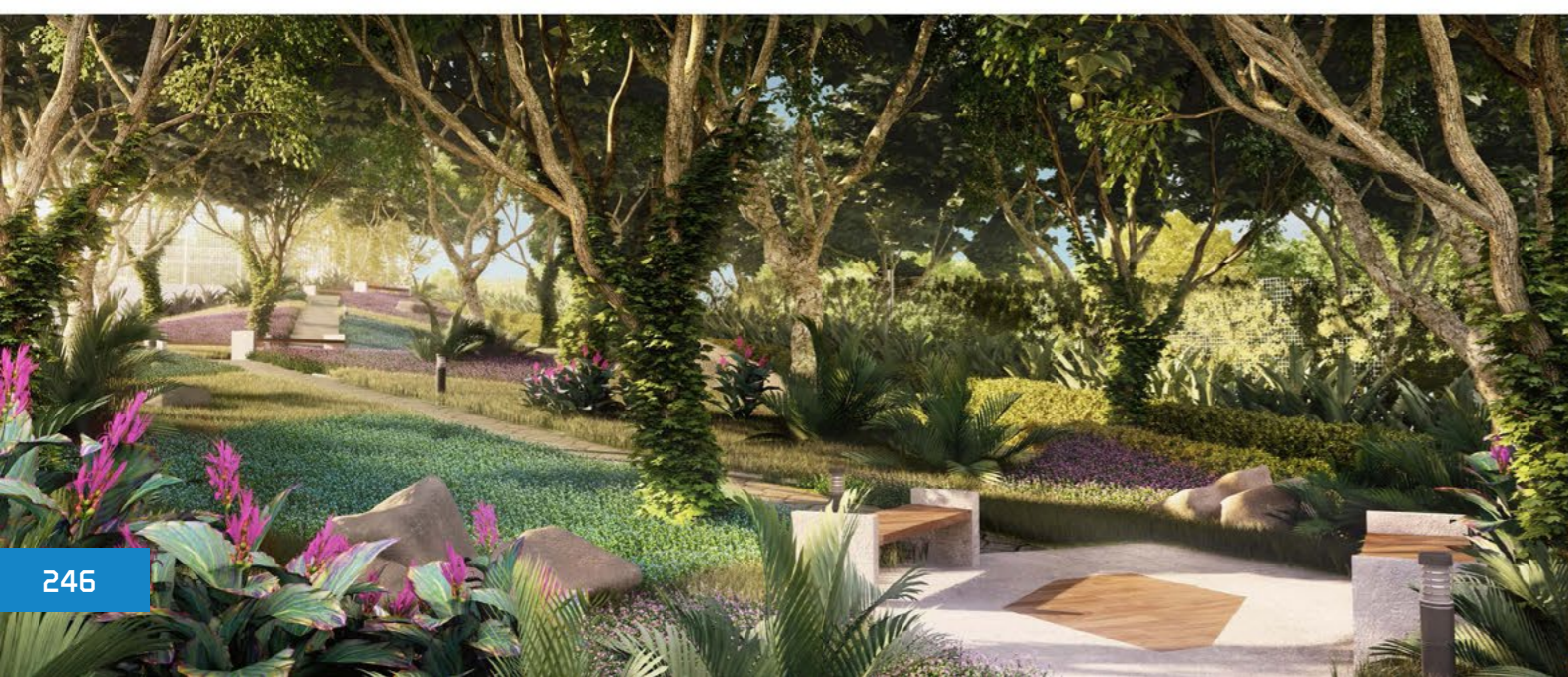
Canopy Hills



馬來西亞吉隆坡
Kuala Lumpur, Malaysia

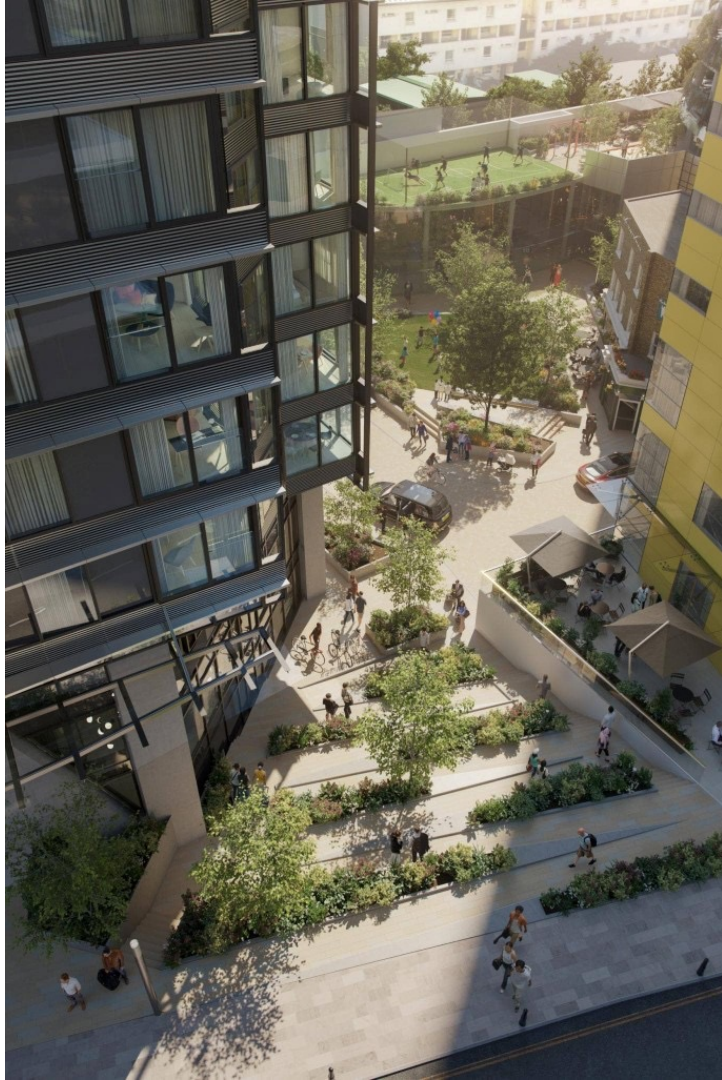
Impiana Hills













CONSORT
PLACE









CITIES

www.hpahk.com

hpa

















光伏電池 PHOTOVOLTAIC CELLS

由陽光所產生的能量
Generate Free Energy
from the sunlight



屋面反光
以減少熱量
Reflective Roofing
to reduce heat gain



KEY PLAN

電話充電站
Phone Charging
Bay



無人駕駛輕軌電源
Power
Driverless
Sky Train



水霧風扇
Moisture
Fans

DC / AC
逆變器
INVERTER
DC/AC

公用工程
UTILITY
SYSTEM

智能電網
SMART
GRID

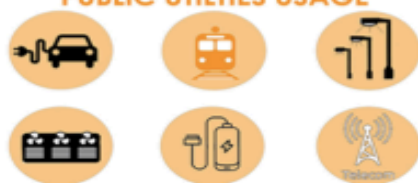
住宅
RESIDENTIAL



商業
工業
機構
COMMERCIAL
INDUSTRIAL
INSTITUTIONAL



公共用途
PUBLIC UTILITIES USAGE












New Manila Bay - City of Pearl is supported by President Duterte and President Mayor Estrada



马卡蒂CBD区域公共交通地铁项目
The metro system in the CBD of Makati, Manila

菲律宾马尼拉大区巴石河交通及环境整治项目
The rehabilitation management of the Pasig River, Manila

比南奥南市拉古纳湖沿湖区域环境综合整治及新经济发展项目
The extensive environmental improvement and new model of economic development in the area of Laguna de Bay, Binangonan



Hong Kong - Philippines Cooperation Agreement Signing Ceremony

香港 - 菲律賓 協議簽署儀式

2018/9/6



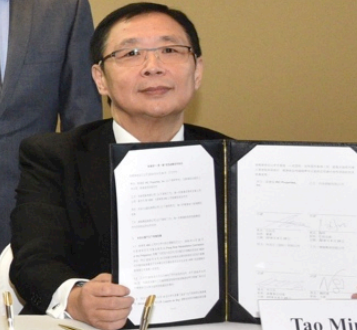
Nicholas Ho
Deputy Managing Director
IBC



Ren Youmin
Director
IBC Properties, Inc.



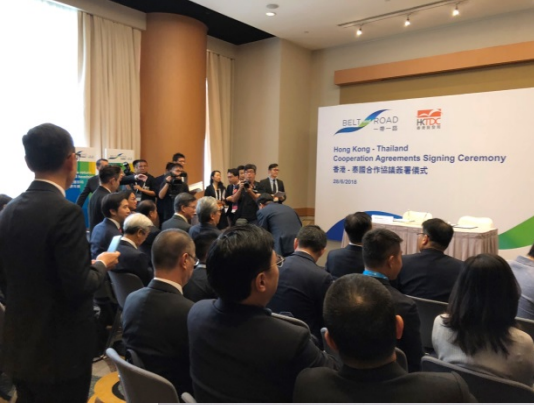
Michael Ngai
Chairman
The Real Group Limited



Tao Min
Chairman
Kwan On Holdings







Nicholas Ho

Deputy Managing Director
hpa

Meesak Chunharuckchot

Chief Executive
Life and Living

POLICY

www.hpahk.com

hpa

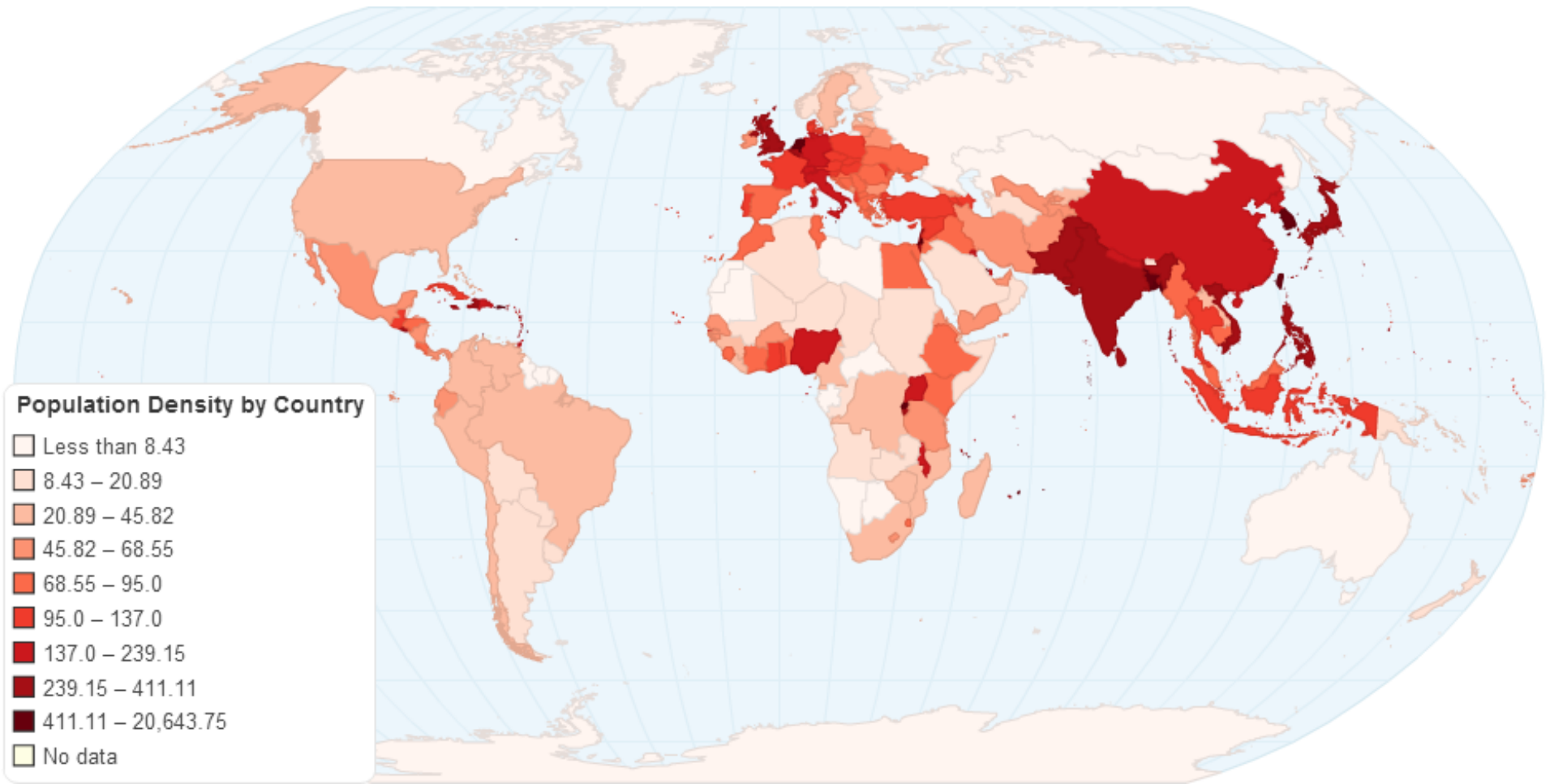
BELT AND ROAD

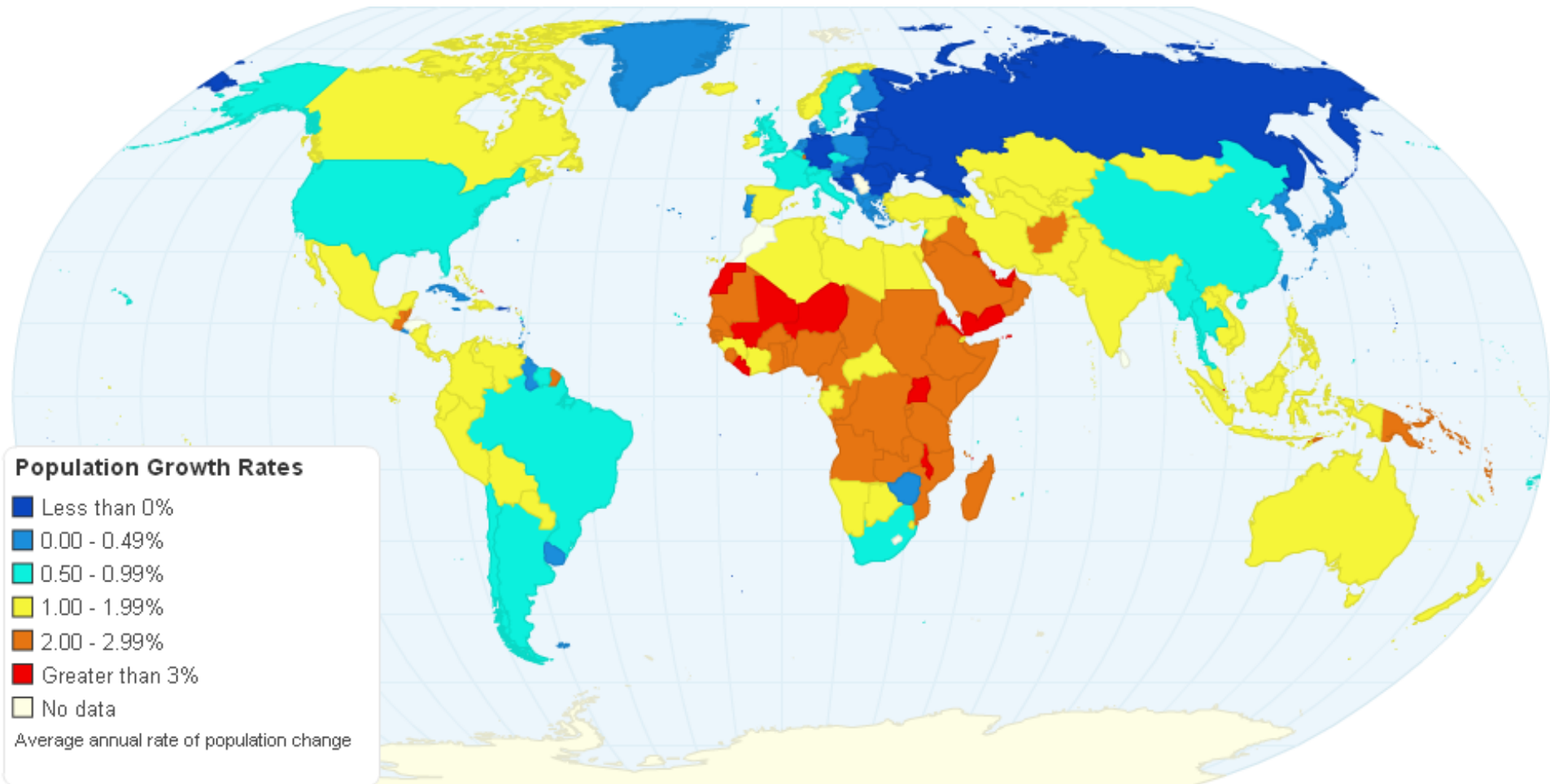
www.hpahk.com

hpa

Population Density by Country

- Less than 8.43
- 8.43 – 20.89
- 20.89 – 45.82
- 45.82 – 68.55
- 68.55 – 95.0
- 95.0 – 137.0
- 137.0 – 239.15
- 239.15 – 411.11
- 411.11 – 20,643.75
- No data





Change in working-age people needed by 2030 to keep dependency ratio at 2016 level

As % of current working-age population



Sources: United Nations; Taiwan National Development Council



“一带一路”国际合作高峰论坛

BELT AND ROAD FORUM FOR INTERNATIONAL COOPERATION

2017年5月14-15日 中国·北京

14-15 MAY 2017 BEIJING, CHINA



ARCHITECT FOR HUMANITY

www.hpahk.com

hpa

ARCHITECTURE

PLANNING

INTERIOR

LANDSCAPE

DEVELOPMENT
CONSULTANCY



You Tube



www.hpahk.com